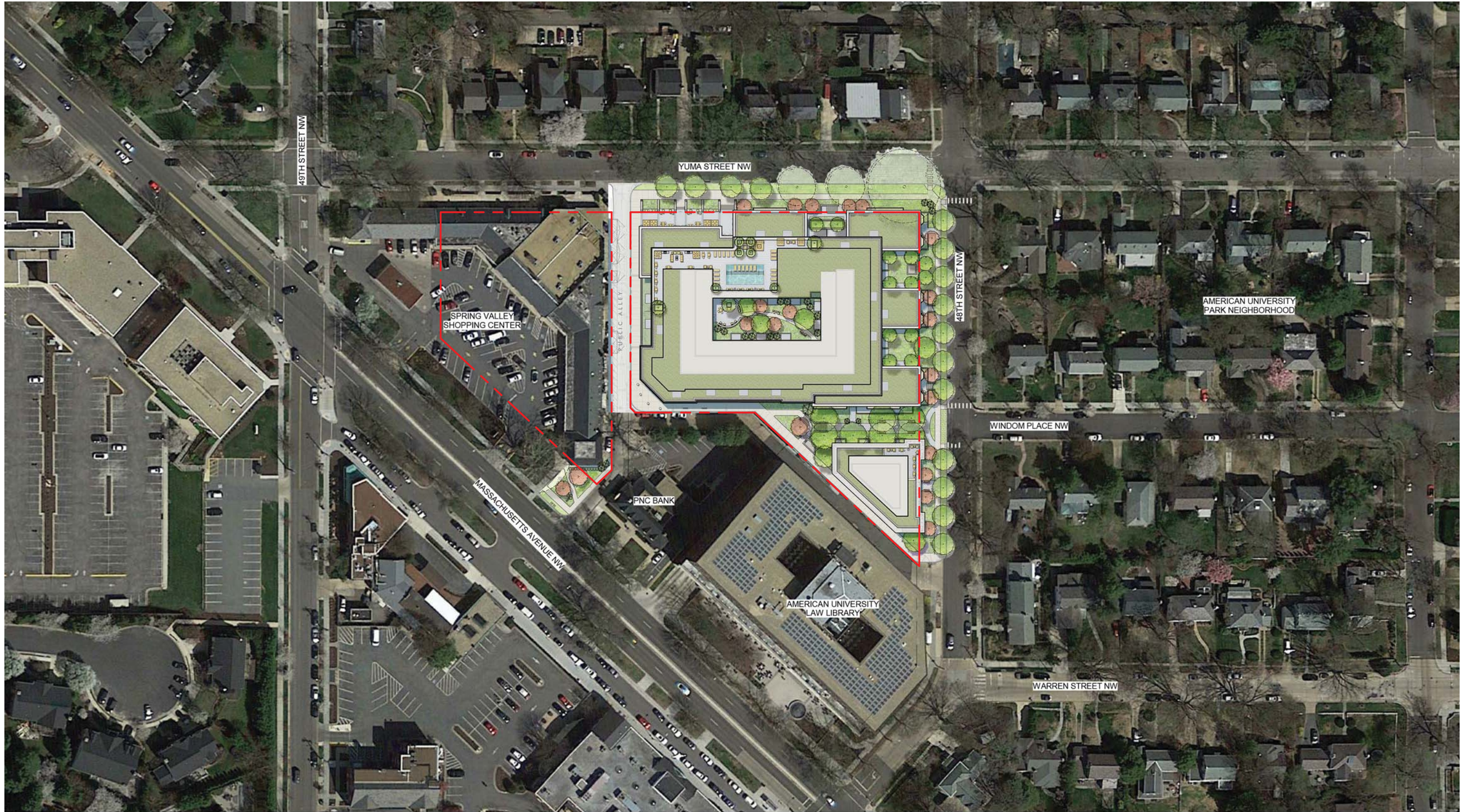
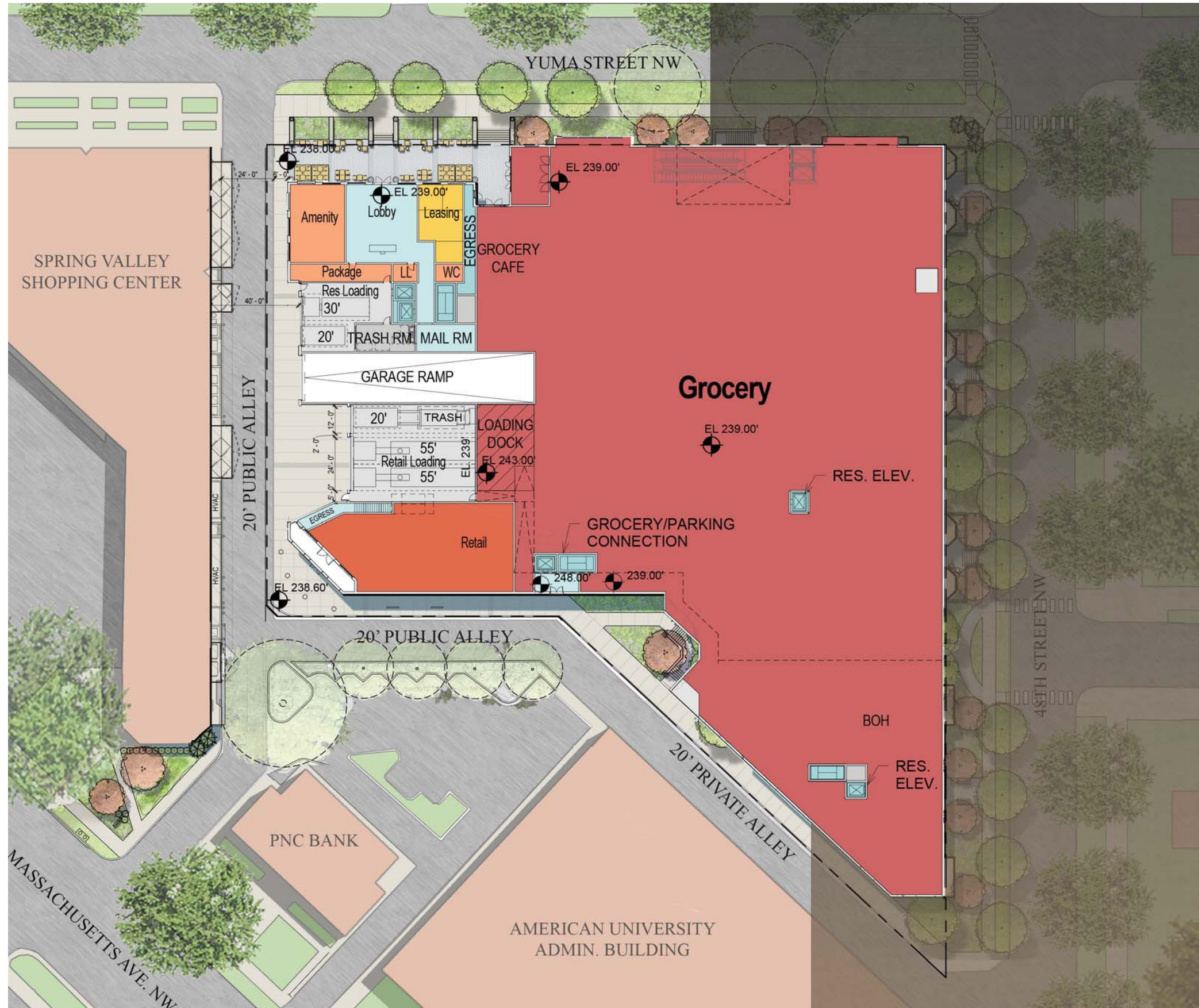


Architecture Exhibits

THIS PAGE INTENTIONALLY LEFT BLANK





© 2016 Torti Gallas Urban, Inc. | 1326 H Street NE 2nd Floor Washington, DC 20002

Lower Level Floor Plan

Note: The interior layouts shown on the building plans are schematic. Changes to the layouts, not affecting the exterior envelope or the square footage distribution, may occur. For additional dimensions see sheet A08



10/26/2016

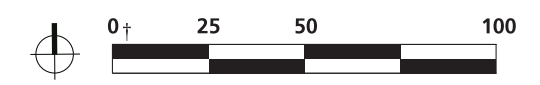
A02



© 2016 Torti Gallas Urban, Inc. | 1326 H Street NE 2nd Floor Washington, DC 20002

First Floor Plan

Note: The interior layouts shown on the building plans are schematic. Changes to the layouts, not affecting the exterior envelope or the square footage distribution, may occur. For additional dimensions see sheet A08



10/26/2016

A03



© 2016 Torti Gallas Urban, Inc. | 1326 H Street NE 2nd Floor Washington, DC 20002

Typical Floor Plan (2nd and 3rd)

Note: The interior layouts shown on the building plans are schematic. Changes to the layouts, not affecting the exterior envelope or the square footage distribution, may occur. For additional dimensions see sheet A08



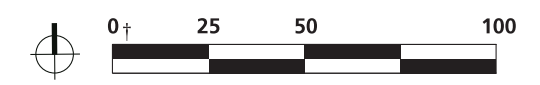
10/26/2016

A04



© 2016 Torti Gallas Urban, Inc. | 1326 H Street NE 2nd Floor Washington, DC 20002

Note: The interior layouts shown on the building plans are schematic. Changes to the layouts, not affecting the exterior envelope or the square footage distribution, may occur. For additional dimensions see sheet A08



10/26/2016

A05

Fourth Floor Plan



© 2016 Torti Gallas Urban, Inc. | 1326 H Street NE 2nd Floor Washington, DC 20002

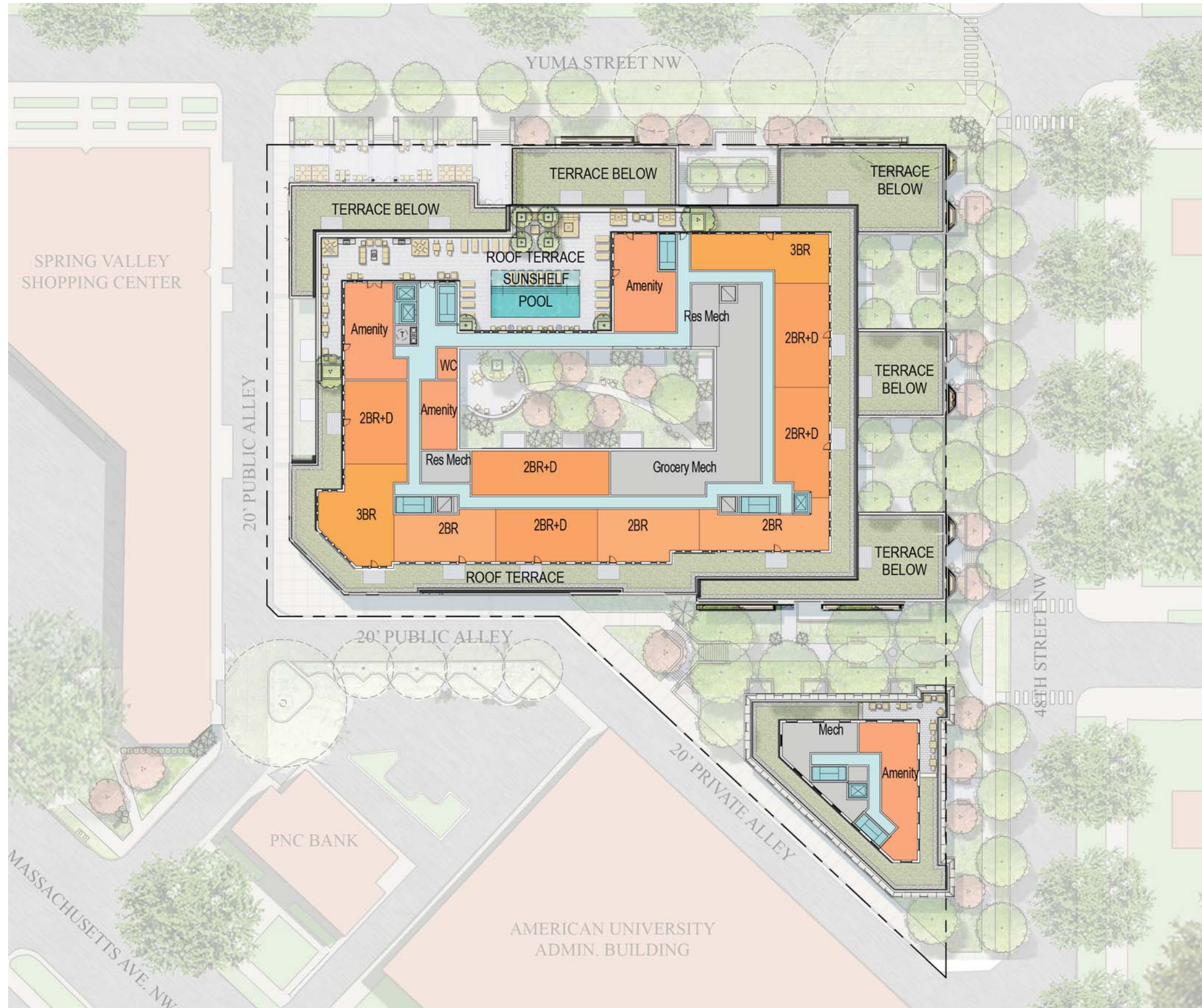
Fifth Plan Building 1 - Fourth Floor Building 2

Note: The interior layouts shown on the building plans are schematic. Changes to the layouts, not affecting the exterior envelope or the square footage distribution, may occur. For additional dimensions see sheet A08



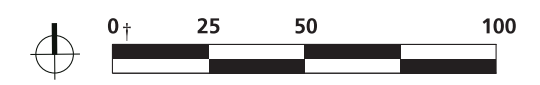
10/26/2016

A06



© 2016 Torti Gallas Urban, Inc. | 1326 H Street NE 2nd Floor Washington, DC 20002

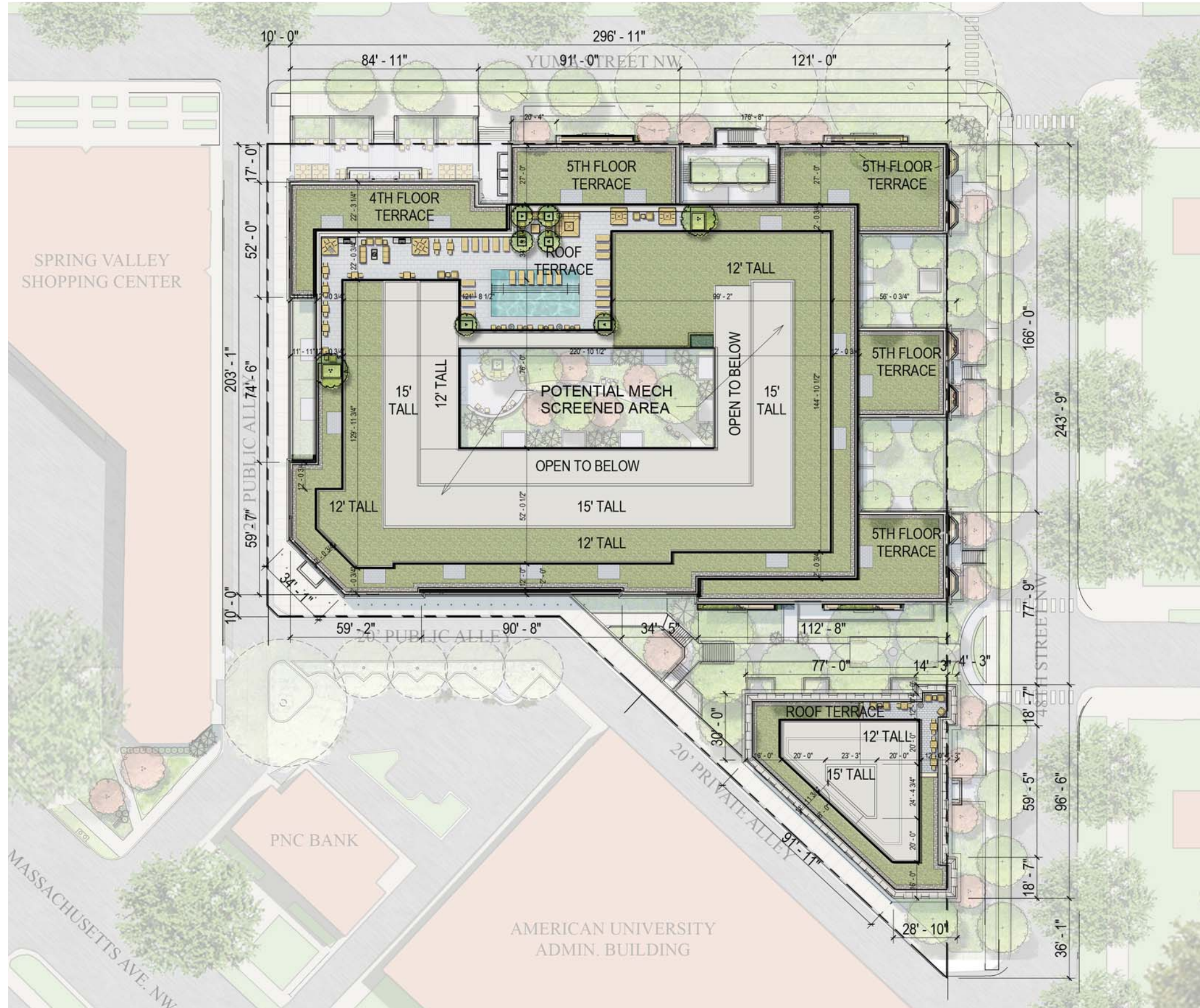
Note: The interior layouts shown on the building plans are schematic. Changes to the layouts, not affecting the exterior envelope or the square footage distribution, may occur. For additional dimensions see sheet A08



10/26/2016

A07

Penthouse Plan



© 2016 Torti Gallas Urban, Inc. | 1326 H Street NE 2nd Floor Washington, DC 20002

Note: The interior layouts shown on the building plans are schematic. Changes to the layouts, not affecting the exterior envelope or the square footage distribution, may occur. For additional dimensions see sheet A08



10/26/2016

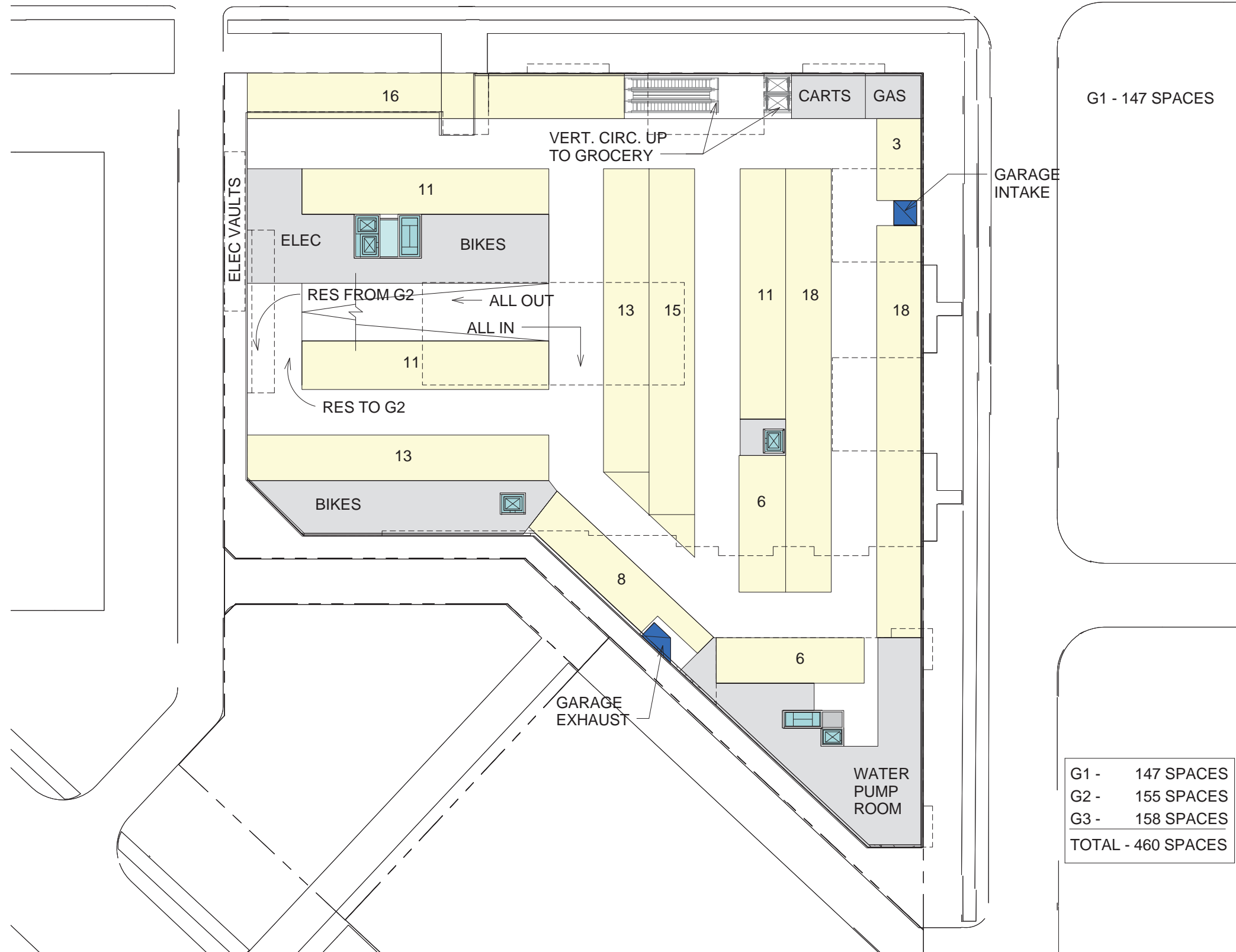
A08

Roof Plan



VALOR DEVELOPMENT
TORTI GALLAS URBAN

THE LADY BIRD



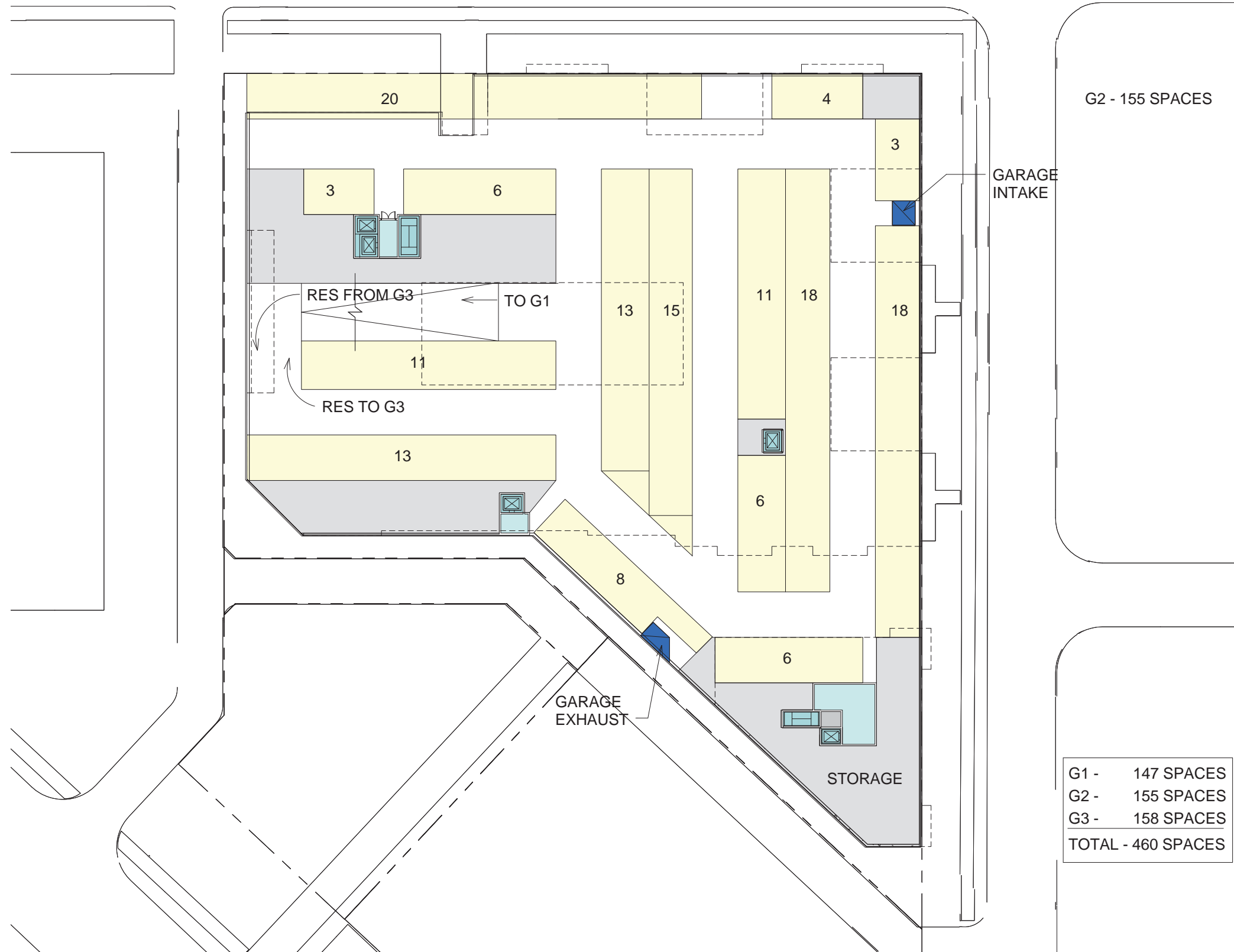
G1 - 147 SPACES

G1 -	147 SPACES
G2 -	155 SPACES
G3 -	158 SPACES
TOTAL -	460 SPACES

Note: Up to 40% of the required parking spaces may be compact spaces, a min. of 8 feet wide by 16' deep. All other parking spaces shall be a min. of 9' wide by 19' deep. All drive aisles shall be a min. of 20' wide.

Note: The interior layouts shown on the building plans are schematic. Changes to the layouts, not affecting the exterior envelope or the square footage distribution, may occur. For additional dimensions see sheet A08

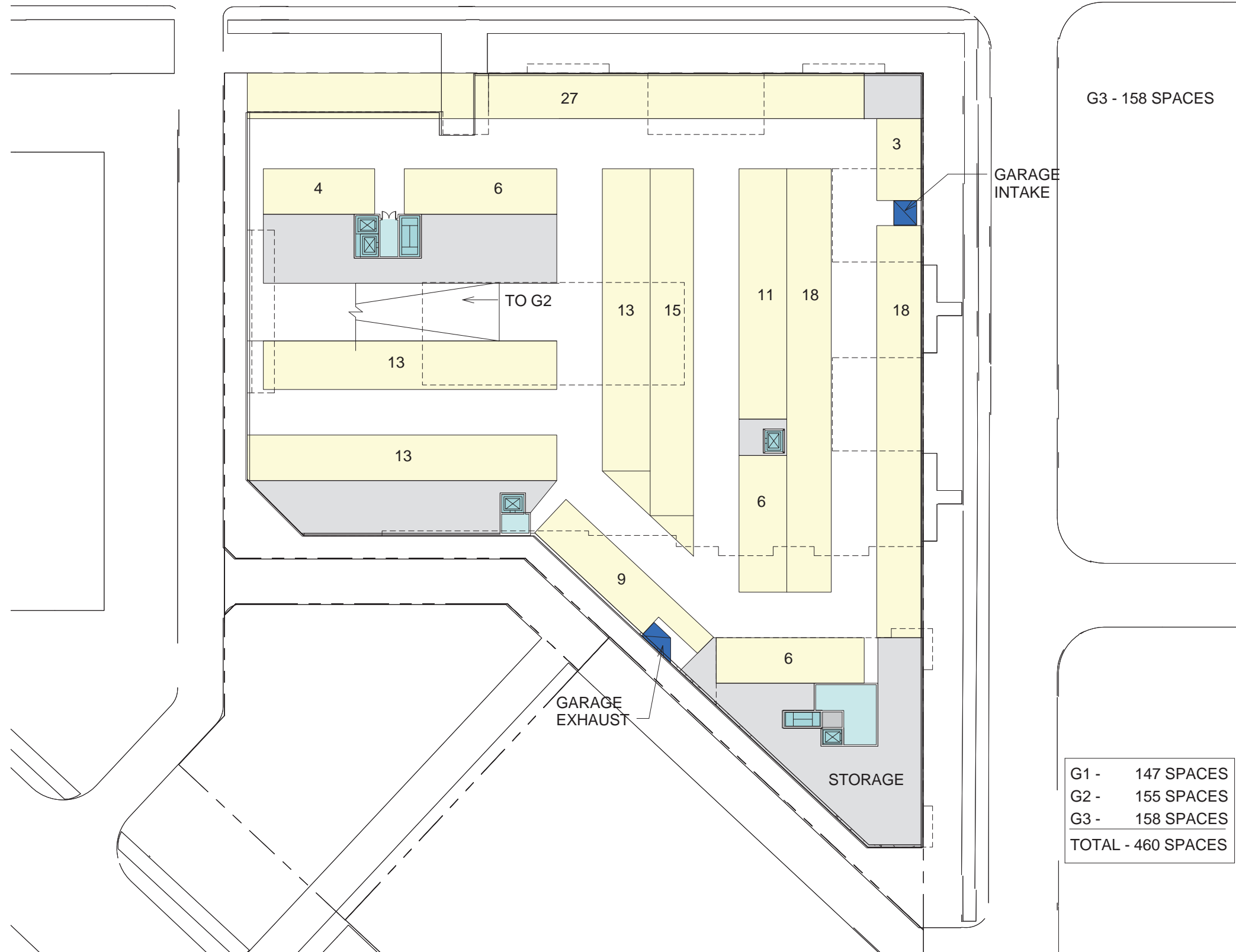




Note: Up to 40% of the required parking spaces may be compact spaces, a min. of 8 feet wide by 16' deep. All other parking spaces shall be a min. of 9' wide by 19' deep. All drive aisles shall be a min. of 20' wide.

Note: The interior layouts shown on the building plans are schematic. Changes to the layouts, not affecting the exterior envelope or the square footage distribution, may occur. For additional dimensions see sheet A08

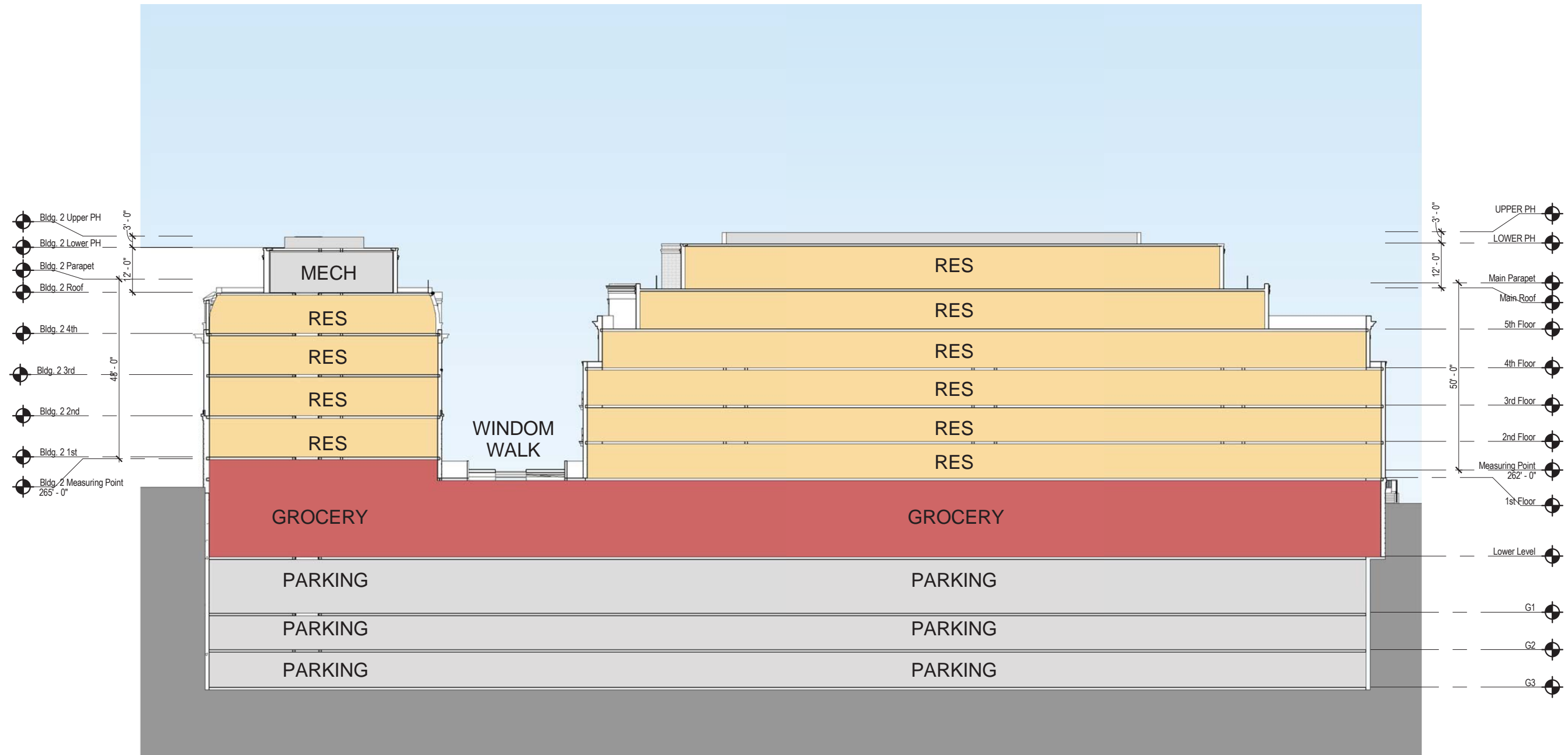




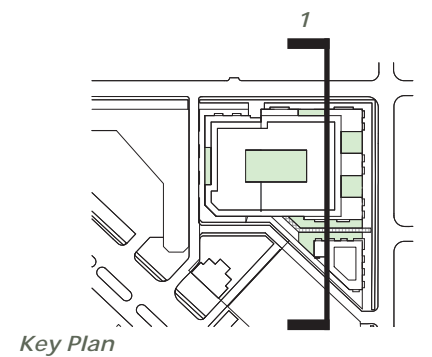
Note: Up to 40% of the required parking spaces may be compact spaces, a min. of 8 feet wide by 16' deep. All other parking spaces shall be a min. of 9' wide by 19' deep. All drive aisles shall be a min. of 20' wide.

Note: The interior layouts shown on the building plans are schematic. Changes to the layouts, not affecting the exterior envelope or the square footage distribution, may occur. For additional dimensions see sheet A08

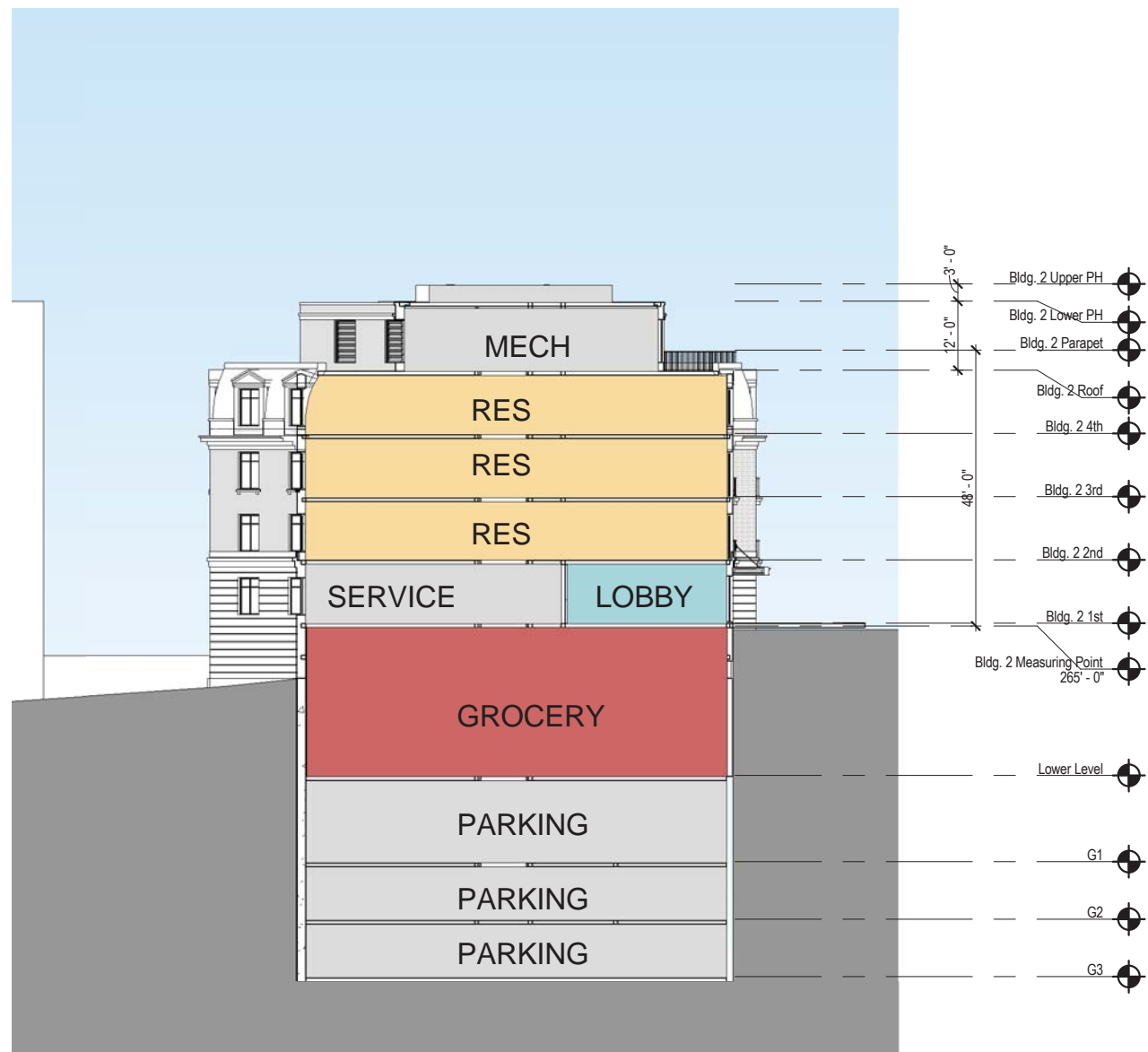




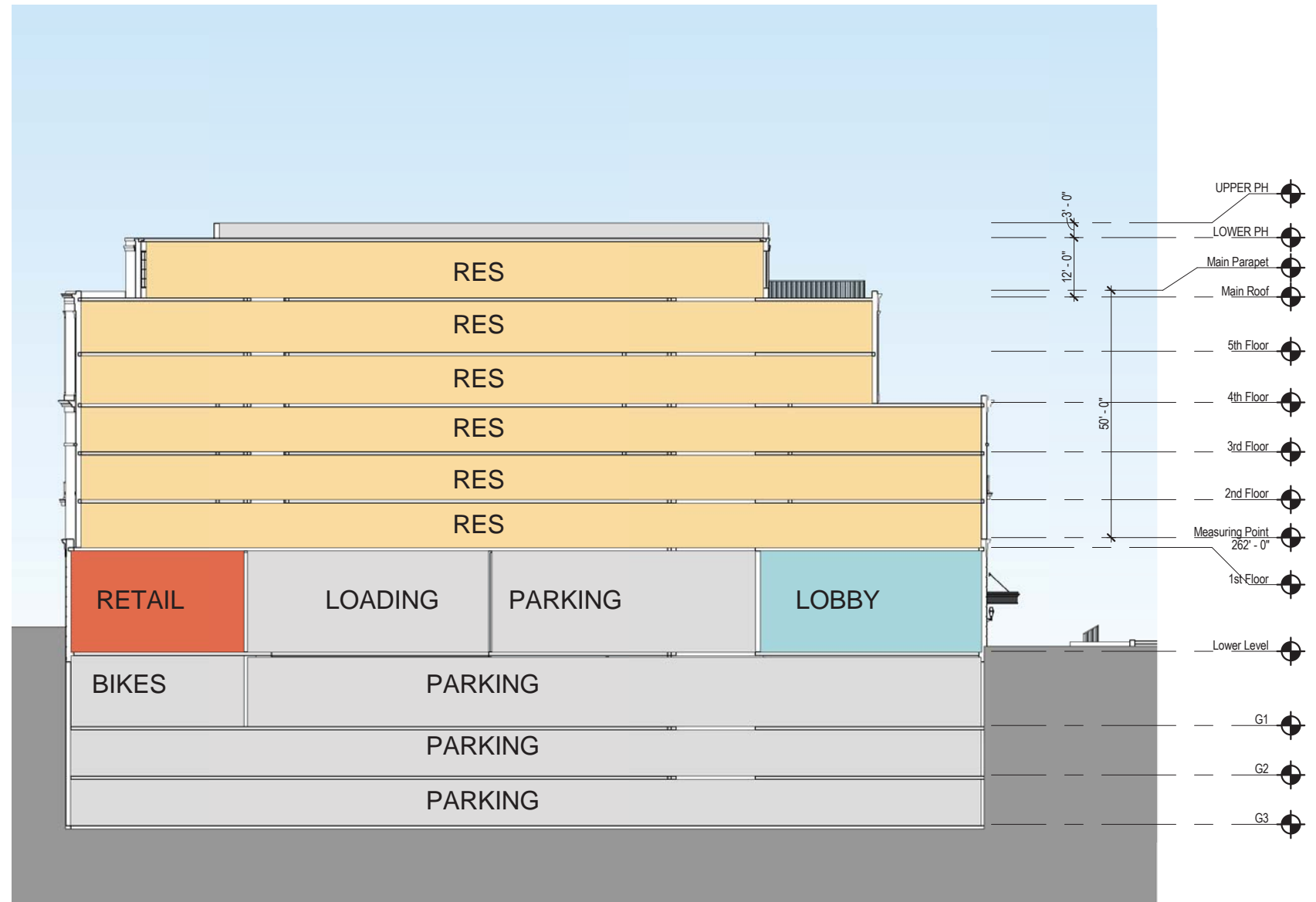
Longitudinal Section 1



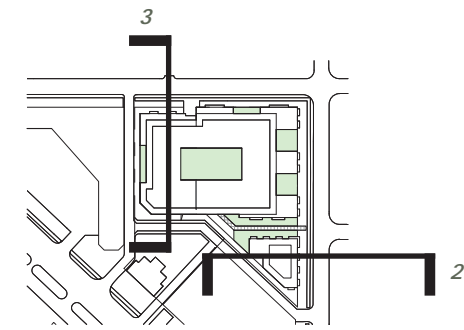
Key Plan



Section 2



Section 3



Key Plan



10/26/2016

A13

© 2016 Torti Gallas Urban, Inc. | 1326 H Street NE 2nd Floor Washington, DC 20002

Building Section





© 2016 Torti Gallas Urban, Inc. | 1326 H Street NE 2nd Floor Washington, DC 20002

10/26/2016

View from East - Matter of Right (Windom Place NW)

A15



© 2016 Torti Gallas Urban, Inc. | 1326 H Street NE 2nd Floor Washington, DC 20002

View from East - Proposed (Windom Place NW)

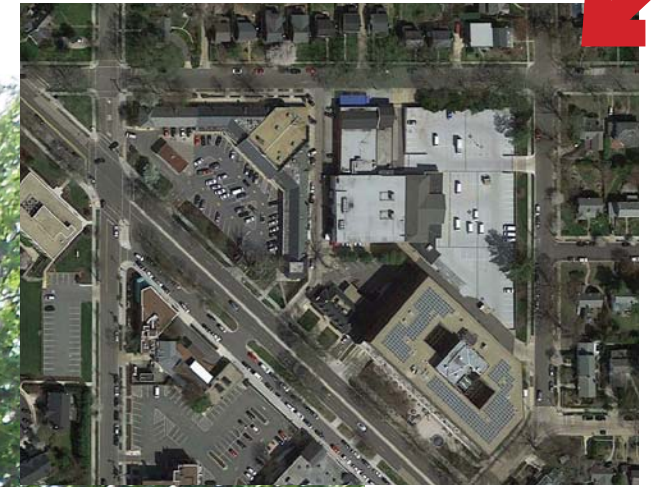
10/26/2016

A16



VALOR DEVELOPMENT
TORTI GALLAS URBAN

THE LADY BIRD



© 2016 Torti Gallas Urban, Inc. | 1326 H Street NE 2nd Floor Washington, DC 20002

View from Northeast - Existing (48th and Yuma Street)

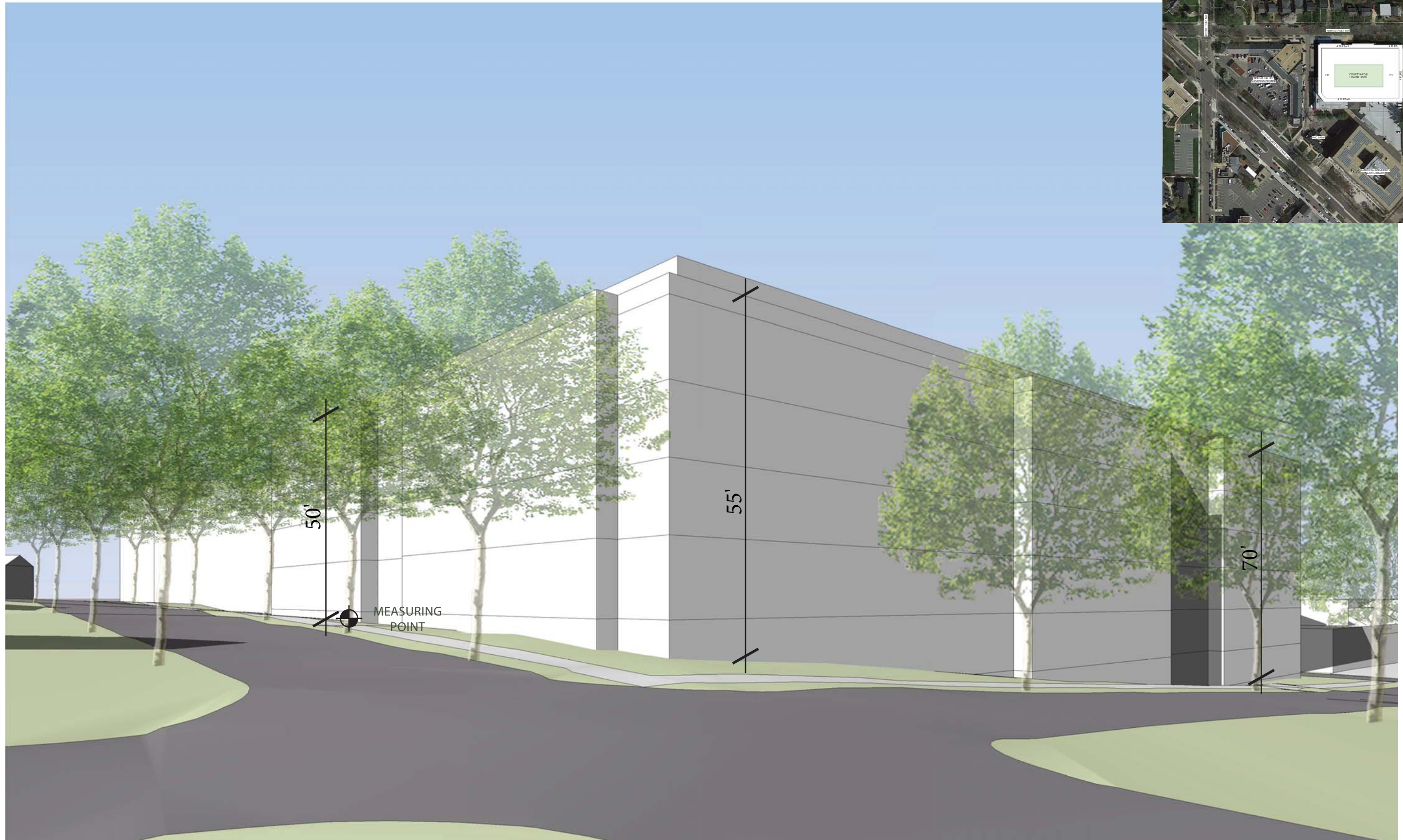
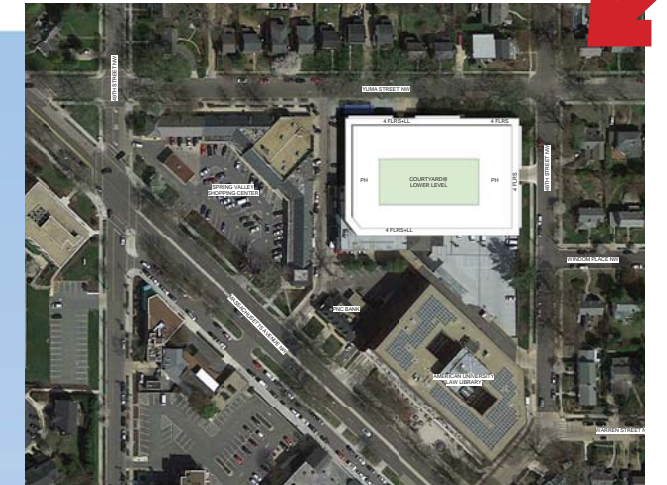
10/26/2016

A17



VALOR DEVELOPMENT
TORTI GALLAS URBAN

THE LADY BIRD



© 2016 Torti Gallas Urban, Inc. | 1326 H Street NE 2nd Floor Washington, DC 20002

View from Northeast - Matter of Right (48th and Yuma Street)

10/26/2016

A18



VALOR DEVELOPMENT
TORTI GALLAS URBAN

THE LADY BIRD



© 2016 Torti Gallas Urban, Inc. | 1326 H Street NE 2nd Floor Washington, DC 20002

View from Northeast - Proposed (48th and Yuma Street)

10/26/2016

A19



VALOR DEVELOPMENT
TORTI GALLAS URBAN

THE LADY BIRD







© 2016 Torti Gallas Urban, Inc. | 1326 H Street NE 2nd Floor Washington, DC 20002

View from Northwest - Proposed (North Side of Yuma Street)

10/26/2016

A22